

NARRATIVE: Joseph Sims was issued 200 acres of land on 23 Oct 1761 in Cumberland County, located "On a branch of Cross Creek Beginning at a stake in Pughs line". This was recorded in Land Patent Book 15 page 375 as Cumberland County Grant # .

Alerts: Archivist Notes at bottom

From PATENT BOOK

Issued: 23 Oct 1761

County: Cumberland

Book: 15 pg: 375

From WARRANT / PLAT

Entered: (no date)

Other Identifiers:

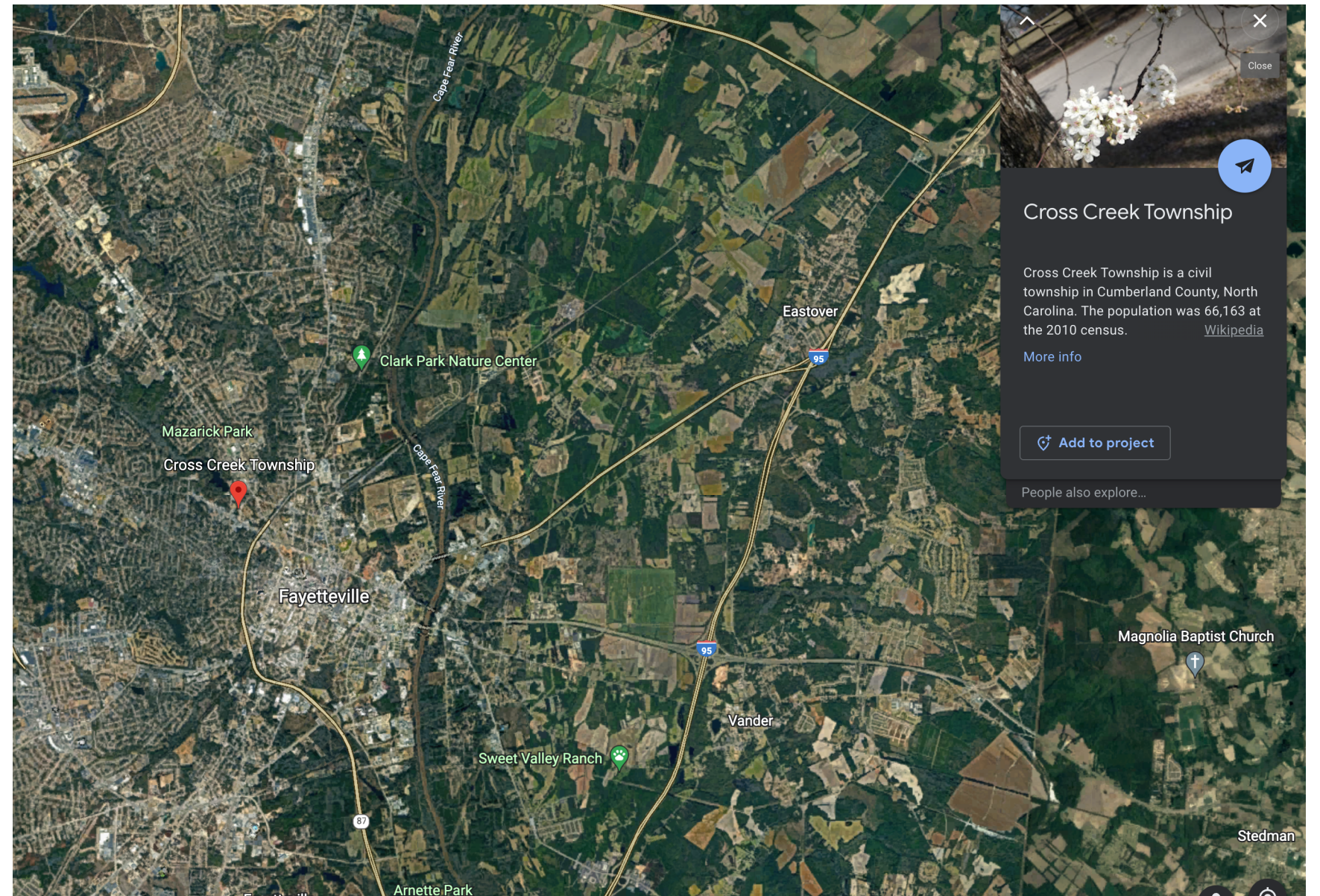
File no.: 310

MARS: 12.14.51.311

Subjects (in archivist order):

Sims, Joseph

Cross Creek



310
Joseph Sims 200 Cumberland On a branch of Cross
Creek beginning at a stake in Pugh's line thence with
said line S. 75 W. 80 poles to a pine thence S. 15 E. 85 poles
to the center of three Scotch Oaks thence N. 75 E. 20 poles
to a stake in Pugh's line thence with said line S. 63 W. 70
poles to a pine thence N. 25 W. 205 poles to a stake in
Pugh's line thence with said line N. 75 E. 285 poles to
the beginning Dated the 23 day October 1761
Arthur Dobbs