

DEED BOOK W #1, Chowan County, N. C.

#398 pg. 193 MARTHA BROWN of Albemarle Co. Widow and Extr. of WILLIAM BROWN decd. to THOMAS BOONE of the Province of N. C. 178ber 1719 for 30 bbls. of Pitch 380 acres on the north side of Meher-rin river part of 640 acres granted to my before husband WILLIAM

BROWN 29 Nov. 1716 the sd. land now in the possession of THOMAS BOON who was seized and possessed of the same by my husband in his Lifetime Wit.: JAMES BATE, THOMAS BOON (sic) Reg. (not given) /s/ MARTHA BROWN, THOMAS MANDEW who is ----- with me in my decd. husband's will /s/ JOHN DEW Attorney

#411 pg. 200 GEORGE SMITH of Chowan Prect. and SARAH his wife to JACOB LEWIS and ISAAC LEWIS (residence not given) 21 Apr. 1714 16 ± current money of ye Province 250 acres more or less on ye west side of Wicacon Creek, joining a branch of Brooks creek, WILLIAM BUNCH, WASER, RASBERRY and ye first Branch next to Little TOWN near JAMES CORLEE part of 640 acres surveyed by JOHN -----RLEY and JAMES CORLEE part of 640 acres surveyed by JOHN RASBURY all houses, orchards and Part of 400 acres surveyed by JOHN SMITH, WILLIAM BROWNE Reg. (not given) Wit.: JOHN SMITH, WILLIAM BROWNE

#412 pg. 201 WILLIAM BROWN of Chowan Prect., planter and MARTHA his wife to MATTHEW RUSHEN of the sd. Prect., planter 21 Apr. 17-- 8 ± 150 acres on ye west side of Meherrin river, joining Di-viding Run and ye River part of 640 acres surveyed by ye aforesd. BROWN Wit.: GEORGE SMITH, JOHN SMITH Reg. 2 Feb. 1714/15

Hofmann

#472 pg. 56 WILLIAM BOON of Chowan Prect. to JOHN BRYANT of Isle of Wight Co., Va. 16 July 1720 8 ± current money 100 acres more or less on the north side of Menherring river, joining MATHEW RUSHING, the second branch and the river now in the actual possession of JOHN BRYAN all houses, orchards, gardens etc. part of 640 acres granted to WILLIAM BROWNE 29 Nov. 1706 Wit.: BENJAMIN FOREMAN, ELIAS FORT ☐ his mark Reg. Chowan Ct. 3rd Tuesday in July 1720 Test.: THOMAS HENMAN, Clerk

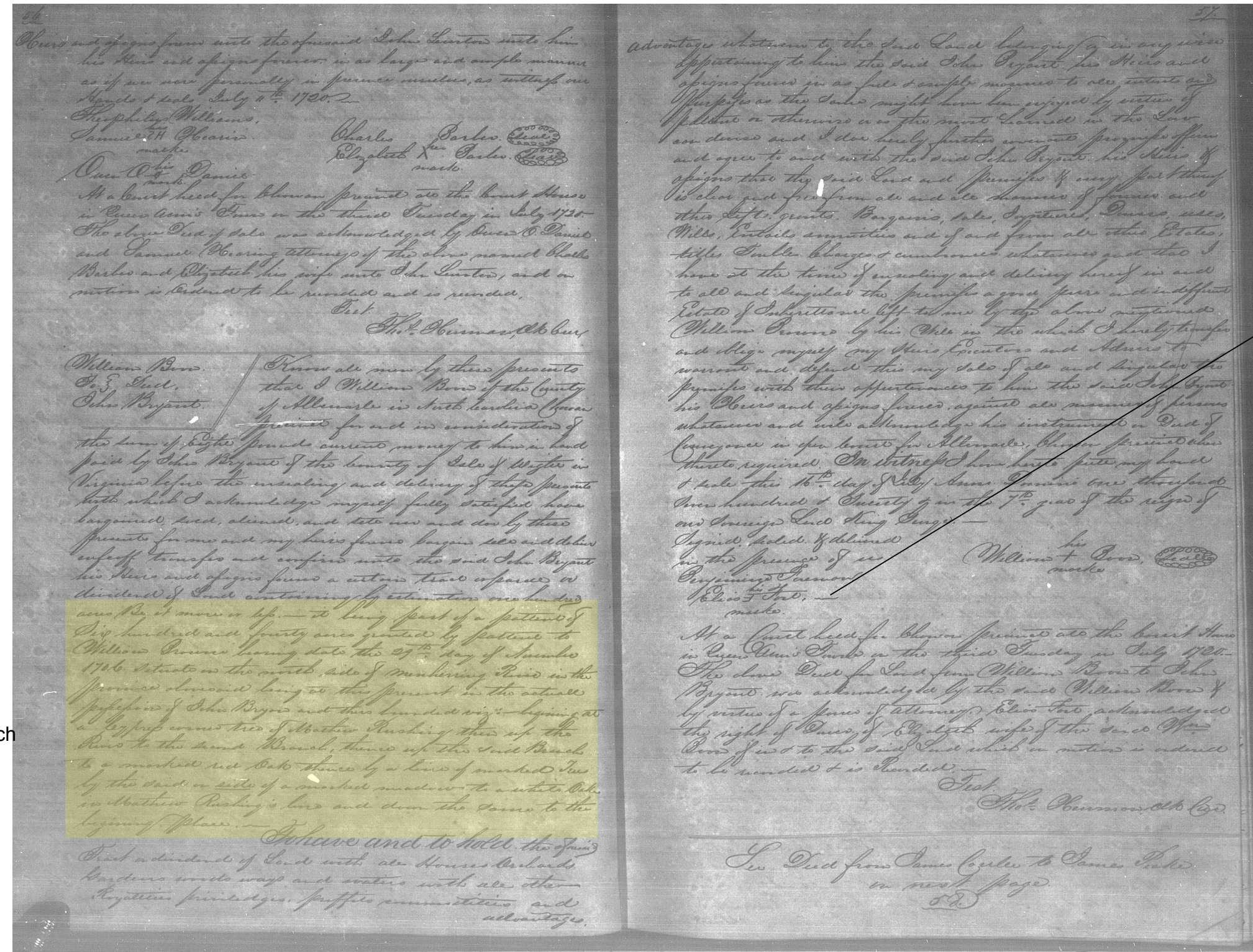
William Boon to John Bryan(t) 100 ac 1720

100 acres out of patent for 640 ac

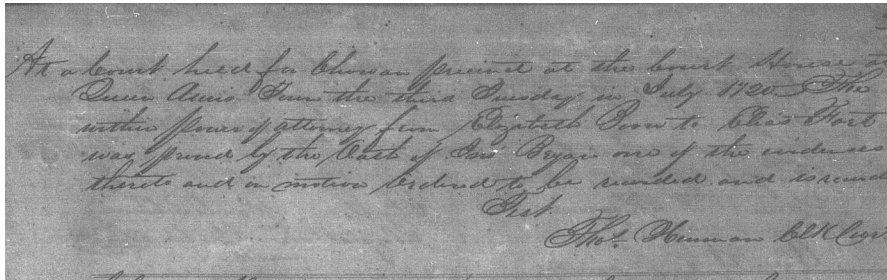
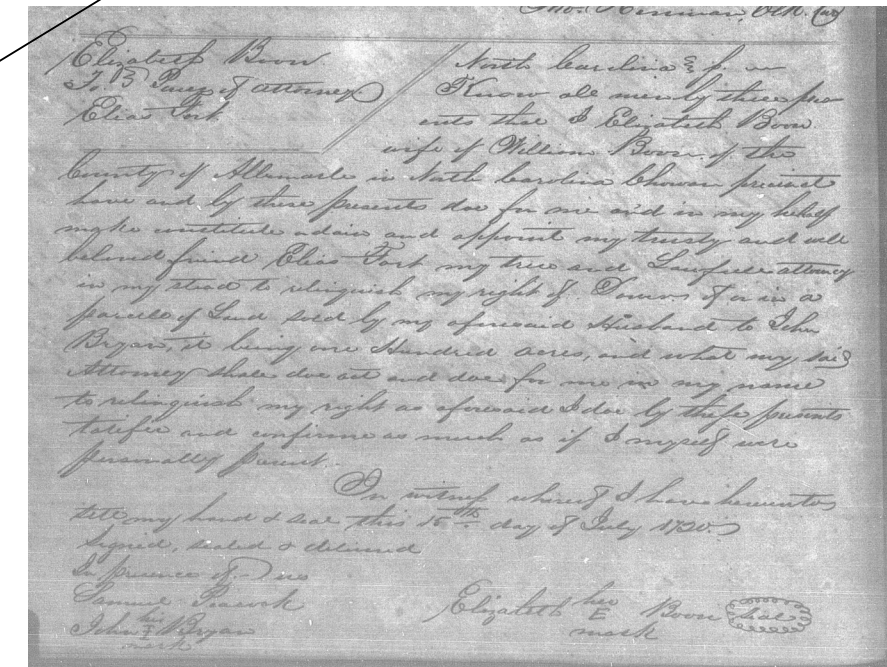
patent of William Browne 29 Nov, 1706

begin x NS Menhering River a corner of Mathew Rushing ... up the Run to the second Branch thence up the [second] branch thence to the side of a meadow then by Rushings line to 1st

1733 pg. 48 JOHN CHESER 3 December 1720 360 acres on ye N. side of Maheron River, joining JAMES BRYAN, buck horn Swamp, buckhorn pond, and WILLIAM BROWN Witnesses: C. EDEN, THOS. POLLOCK, FRA. FOSTER, RICHD. SANDERSON, JOHN LOVICK



POA Elizabeth Boon wife of William Boon to Elias Fort



Is she the sister of Elias Fort?

