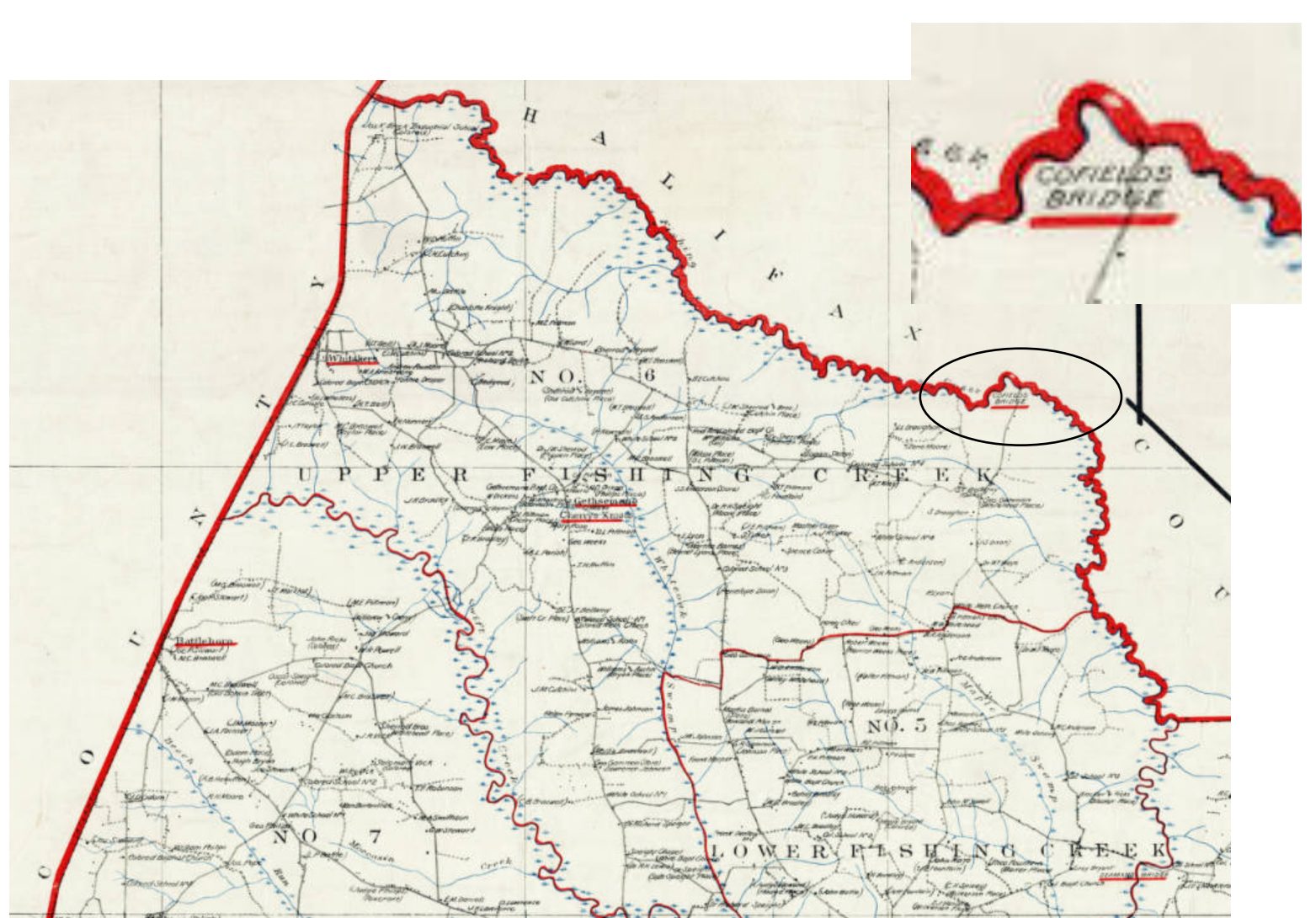


**Gilmer 1860s "Civil War" Map
Edgecombe County**

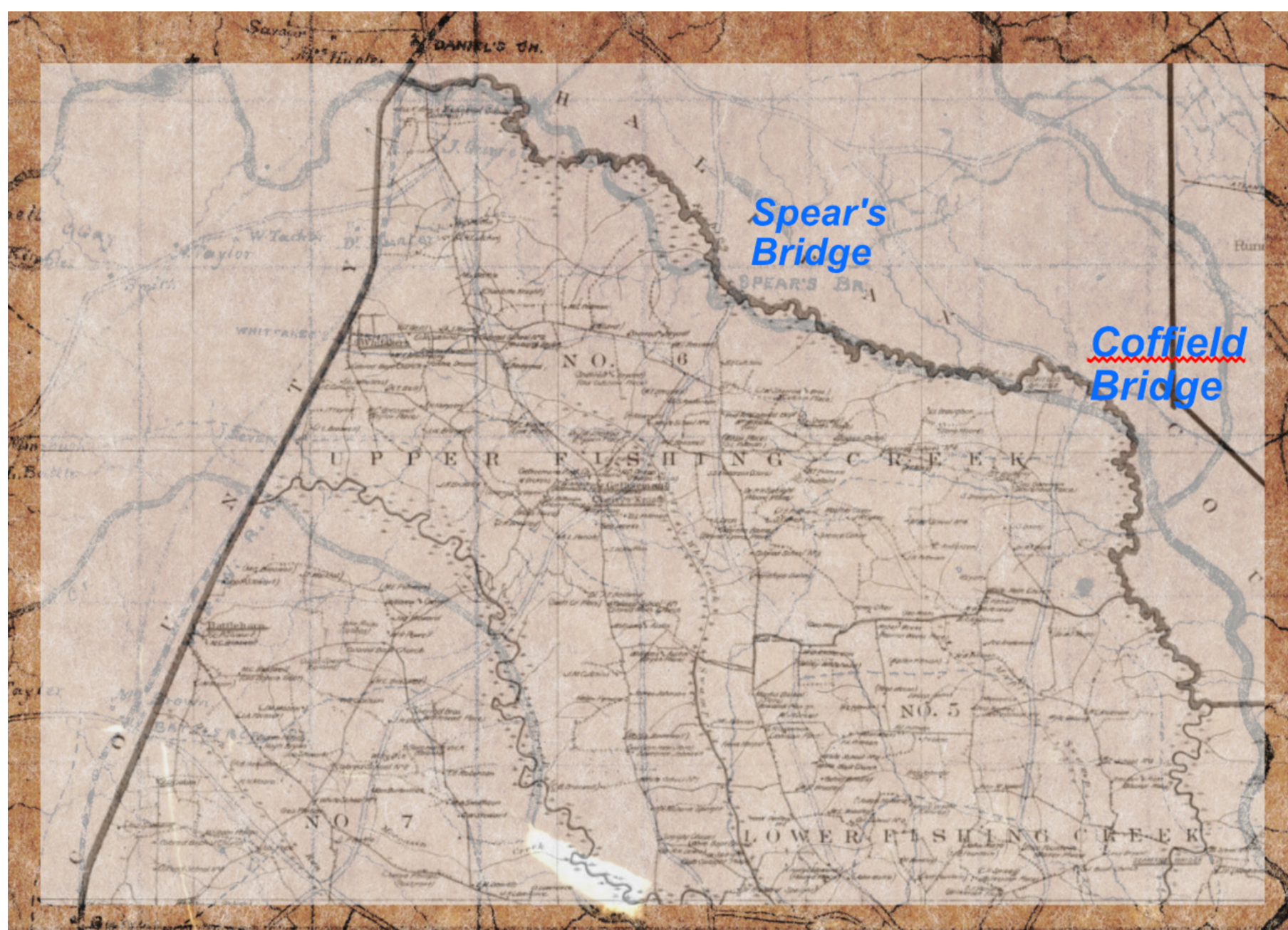
*Maps made prior to aerial photography, in my opinion,
may as well have been drawn by Drunks and/or Lunatics...
they were not particularly accurate per "the Big Picture".
But they tried...*



**1905 Pike Map
Edgecombe County**



The two maps overlaid



**This is what happens when you ask the Local History Librarian at Braswell Memorial Library in Rock Mount, NC
aka, Traci the Librarian**

Here's what Jeremiah Battle said in 1811:

"It has four bridges Wyatt's, Speir's, Coffield's, and Sessum's, the two first are built and supported at the joint expense of these two counties."

https://www.carolana.com/NC/Counties/edgecombe_county_nc.html

NOTICE.
OFFICE BOARD CO. COMMISSIONERS,
Tarboro, N. C., Jan. 21, 1879.
Ordered by the Board that Spear's Bridge
be and the same is hereby discontinued as a
public bridge until further notice, and the
Clerk advertise the same in the usual way.
Test: B. S. KEECH,
Jan. 23, 1879-4t. Deputy Clerk.

The Tarborough
Southerner
Tarboro, North Carolina •
Thu, Feb 13, 1879
Page 2

The Sixth District or Township.
Beginning at the mouth of White
Oak Swamp in Swift Creek, thence up
said Swamp to "George's Ford,"
thence along a path or Cart way lead-
ing therefrom, to the Spier's Bridge

Road; thence up said Road to another
Cart or path way, commencing near the
residence of the late Henry Newsom;
thence along said path or way leading
by the residences of Wm. Atkins, Mer-
rit Weeks and William Weeks, cross-
ing Maple Swamp, and out to the new
Road leading to Coffield's Bridge;
thence a straight line through a Pocos-
sin to the head of the "Cabin" Branch;
thence down said Branch to Fishing
Creek; thence up said Creek to the
Halifax County line; thence along said
line to the Nash County line; thence
along said line to Swift Creek; and
thence down said Creek to the mouth
of White Oak Swamp at the beginning.
To be known as "Upper Fishing
Creek" District or Township.

The Tarborough Southerner
Tarboro, North Carolina • Thursday, November 05, 1868

**COMMISSIONERS
AT SPIERS BRIDGE**

In accordance with an understand-
ing, that had been reached at the
last regular meeting of the county
commissioners, the entire board met
yesterday at Spiers Bridge.

The people of that vicinity had
been before the county commission-
ers on several occasions asking that a
bridge be built over Fishing creek
at the old location where Spier's
bridge used to stand. This old
bridge has long since been abandon-
ed.

The claim made by those present at
the sessions of the commissioners was
that the rebuilding of this bridge
would be a saving of from three to a
four miles each way to and from
Enfield.

After several hearings by the com-
missioners the board decided to go
in person and make an examination
for themselves.

The members of the Whitakers
board were invited to be present
yesterday and go over the matter
with the county commissioners.

It is reported that the actual sav-
ing in distance to Enfield from this
portion of the county will amount
to not more than one and one-half
miles.

The commissioners were served
with an elegant barbecue.

The Daily Southerner
Tarboro, North Carolina •
Wed, Oct 18, 1922
Page 1

For Sale or Rent.

THE Plantation on Fishing Creek, near
Coffield's Bridge, adjoining the resi-
dence of Dr. Jno. T. Bellamy, contains
about 1400 acres, about half cleared, very
fine Cotton and Corn land. Half of pres-
ent growing crop will yield, I think, 1000
lbs. seed cotton and 8 bbls. corn per acre
without any guano. Apply to Dr. J. T.
Bellamy near the farm, or to
J. G. WHITFIELD,
Enfield, N. C.
sep22-42-2mcow]

The Tarborough Southerner
Tarboro, North Carolina •
Sat, Sep 29, 1866
Page 3

Ordered, by the Board, that the public
road in Township No. 6, leading from L.
R. Cherry's Cross Roads to the road lead-
ing from Enfield to Tarboro via Spier's
Bridge be discontinued as a public road
from the point at which it crosses the pub-
lic road from Whitaker's old mill on the Allen
farm, to the intersection of said road from
Enfield to Tarboro, as above stated.

The Tarborough Southerner
Tarboro, North Carolina •
Thu, Feb 12, 1880
Page 3

**David Gammon reasoned that he remembered from the Civil War that Spear's Bridge had fallen down, or was torn down.
So it was not on the newer map. The newer Bridge has been there my entire life.**