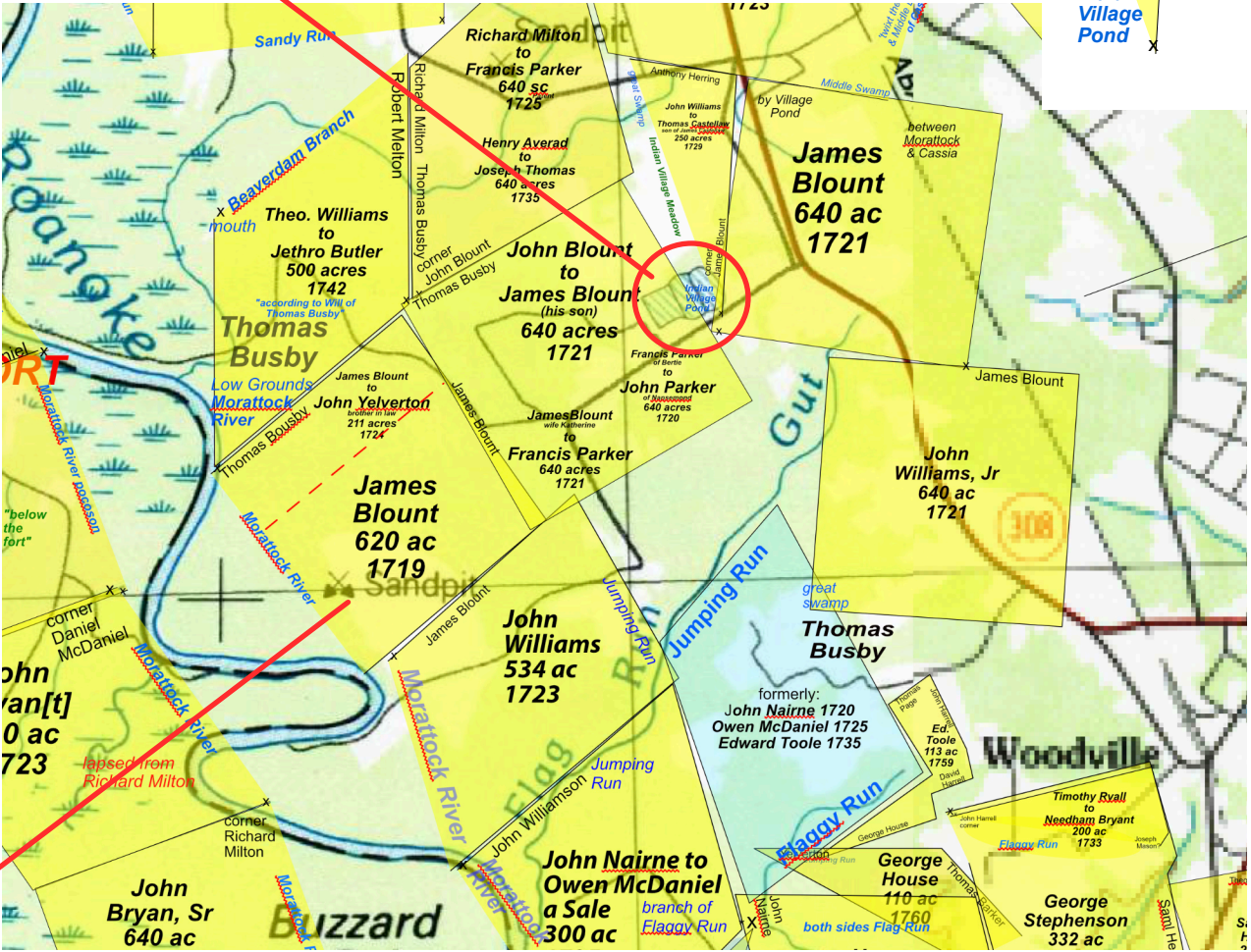
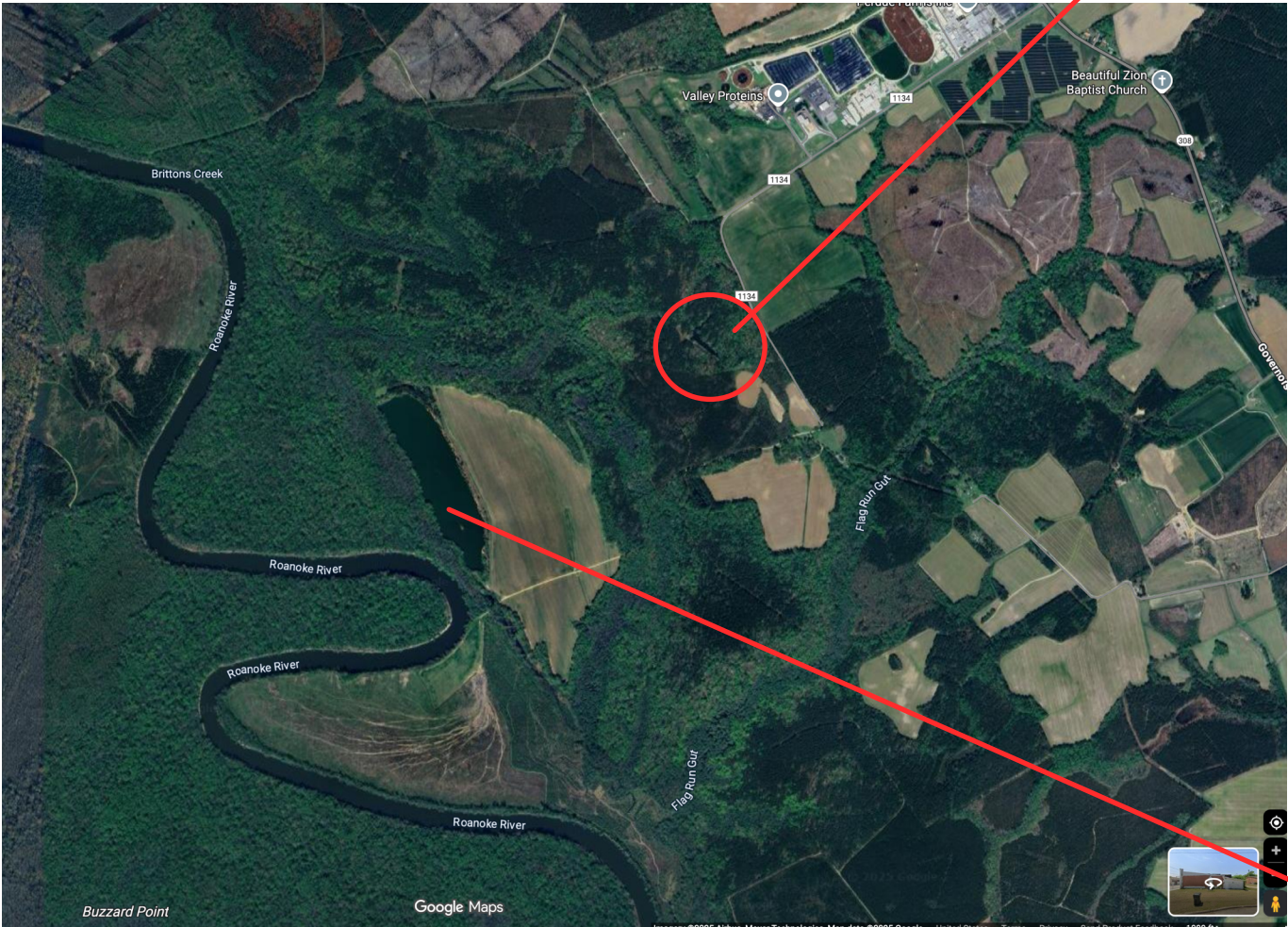
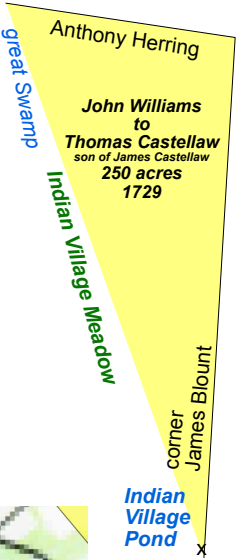


Apparently, this is the remnant of the 300 year old Pond as referred to in the old deeds...

Indian Village Pond

If my map is accurate (which I think it is) then the deed of 1729 is exactly where it was in 1729... as evidenced by the Pond (as noted in the actual deed).



modern Sandpit

A "sandpit" on USGS topographic maps refers to a point symbol representing a gravel, sand, clay, or borrow pit—an open excavation site where materials like sand, gravel, or clay are extracted for construction, road-building, or other uses. 3 sources These are categorized under "Mines and Caves" symbols, distinct from larger quarries or open-pit mines (which have their own symbols, like a filled circle with a cross). 2 sources

...once the sand has been excavated, it is natural for the pit to fill with rainwater, and runoff...

Flagg Run Gut, as noted on the map, is the historical "Jumping Run".

The actual, and historic, Flagg Run is near a mile below it...

Google Maps Woodville, NC, a couple miles west