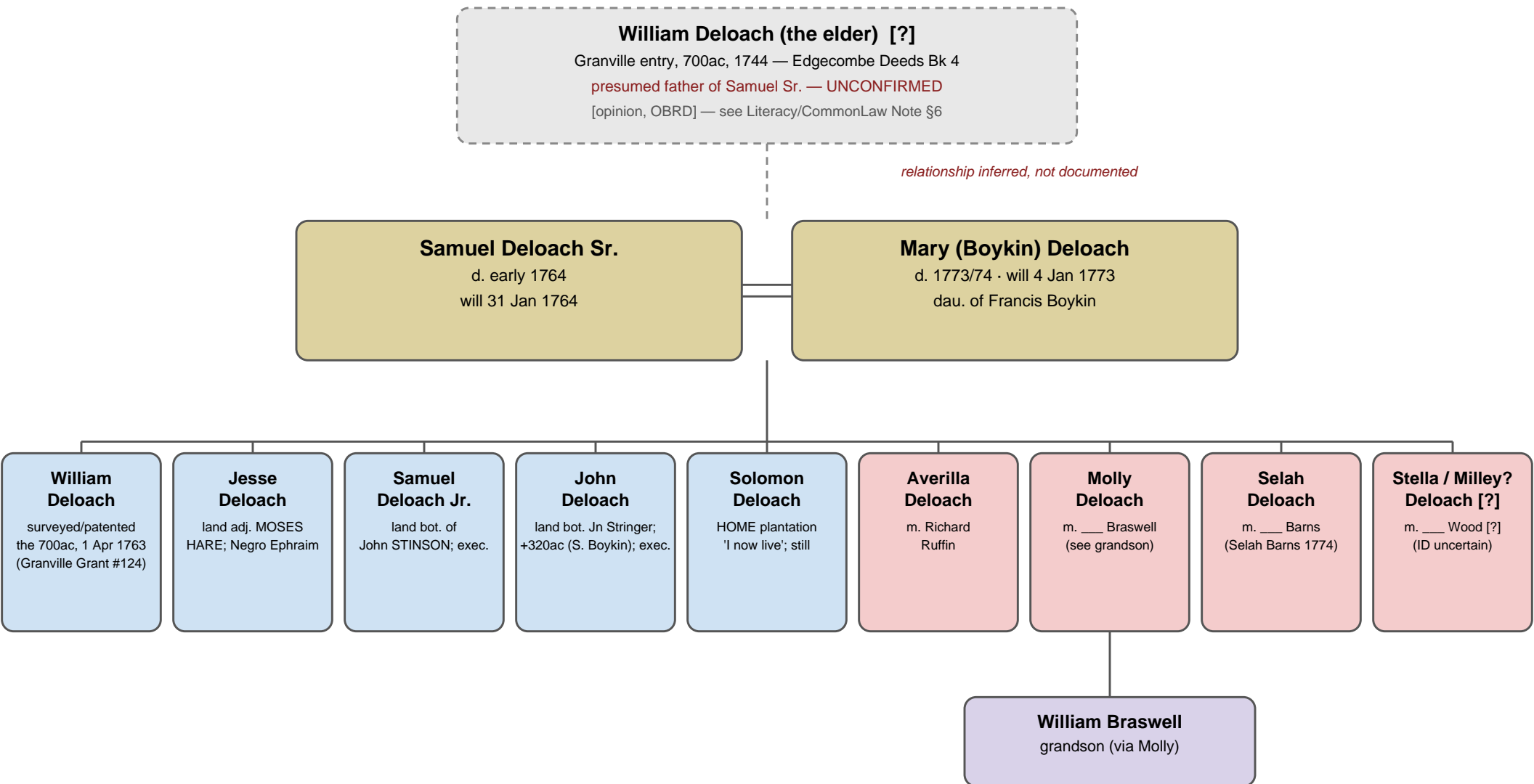


The Family of Samuel Deloach Sr. & Mary (Boykin) Deloach

Edgecombe County, North Carolina — reconstructed from the 1764 (Samuel Sr.) and 1773/74 (Mary) wills, plus the 1744/1763 Granville-grant nuance (3 Jul 2026) suggesting an earlier William



NOTES & SOURCES

NEW (3 Jul 2026): the gray dashed box above is a SPECULATIVE addition, not in the wills. It reflects a 1744 Granville grant entry ("Granville to William Deloach, 700ac, 1744," Edgecombe Deeds Bk 4) whose recorded metes name Wm Haywood, Samuel Deloach, Hardy Williamson, a Griffis corner, Gosney, and Sherrod — a 1755–1763-era neighborhood, not an actual 1744 one. Read as: an early Granville ENTRY (1744) that lapsed unpatented, later surveyed/completed by the grandson William (below, dated son) on 1 Apr 1763 — with Samuel Sr.'s own already-established line serving as the begin corner. This is the SAME entry-lapse-regrant pattern already documented in this project for Moses Hare. See Deloach_Literacy_CommonLaw_Note.md §6 for the full reasoning and caveats. [opinion, OBRD — NOT doxa.] No document found states outright that this elder William was Samuel Sr.'s father — treat the dashed line as unconfirmed.

- Sons (blue) and daughters (pink) are listed in arbitrary order — birth order is not given in the wills.
- [?] = uncertain reading / identification. 'Stella Deloach' (named 1764) and 'Milley Wood[ard?]' (1774) may be the SAME daughter; not certain.
- Molly Braswell is named in the 1764 will; by 1774 she is represented only by her son, grandson William Braswell — she was likely deceased by then.
- Selah appears as 'Selah Deloach' in 1764 and 'Selah Barns' in 1774 (married between the two wills). Averilla = wife of Richard Ruffin.
- Boykin ties: Francis Boykin = Mary's father (gave Samuel Sr. land in Northampton Co.). Solomon Boykin = seller of John's 320 acres. Kin link probable, unproven.
- The FAULK family witnessed BOTH wills (John Faulk on each; Hannah & Sarah Faulk in 1774) — cf. the project's 'Faulks Branch / Faulk's line' anchor.
- Executors — Samuel's will: wife Mary + sons William, Jesse, Samuel. Mary's will: sons Samuel + John.
- Son William (Gen 3) independently confirmed [doxa] as the executor named in Samuel Sr.'s 1764 will, and separately [OBRD] as the literate signer/surveyor of the 1763 tract (Deloach_Literacy_CommonLaw_Note.md §1§2).
- Sources: FamilySearch, NC Probate Records, Edgecombe, Wills 1760–1778 Vol. A — img 146 (pp.134–137) & img 221 (pp.206–207). New: 'Deloach Wm 1744 nuance.pdf' (Walnut Creek vol), FamilySearch ark 3:1:3QS7-9983-DNK3, img 136/766, IGN 007513462 (Edgecombe Deeds Bk 4, 1763–1768, State Grants index).

Appendix — The 1744/1763 Reading: Full Reasoning

Written 3 Jul 2026, answering Marc's question whether the 1744 Granville entry makes William Deloach the father of Samuel Deloach Sr. Carried over from chat, verbatim in substance.

The deed book entry (Edgecombe Deeds Book 4, 1763–1768, recorded under “State Grants” — Granville to Deloach) reads “Granville to William Deloach, 700 acres, 1744” — but the survey metes tied to it name Wm. Haywood, Samuel Deloach (twice), Hardy Williamson, a Griffis corner, Gosney, and Sherrod as the surrounding calls. That’s the nuance: those are 1755–1763-era neighbors, not 1744-era ones. Wm Haywood in particular wasn’t old enough to hold an established corner in 1744. So this document, headed “1744,” was almost certainly recorded (surveyed and finalized) in the 1760s — the 1744 date is the original Granville entry, not the date of the actual boundary walk.

That reframes the question. Read the begin call again: “begin x corner Wm. Haywood in Samuel Deloach line.” Samuel Deloach’s line is being used as an already-fixed reference point for surveying William’s 700 acres. That’s the opposite of what you’d expect if this William were laying out fresh land for an as-yet-unborn or minor son named Samuel — it reads as Samuel already having his own established, recognized boundary at the moment this tract got surveyed.

The reading that fits everything now on file: this isn’t one man holding one grant for 19 years. It’s a three-generation succession. William Deloach (an elder, presumably Samuel’s father) made the original 1744 Granville entry for 700ac. It sat unpatented — exactly the pattern already documented in this project for Moses Hare (entered, lapsed, re-granted years later). By the time it finally got surveyed and formally patented, Samuel Deloach — the entrant’s son — was already a grown, established neighbor with his own adjoining line, which is why his boundary anchors the begin call. And the man who actually walked this survey and got it recorded in 1763 is almost certainly the same William already pinned down doxa-level in the 29 Jun note: Samuel’s own son, executor of Samuel’s 1764 will, the signer who surveyed his own tract 1 Apr 1763 and subdivided it to Gosney and Forehand.

So: yes, there was very likely an early William Deloach a full generation before Samuel — probably his father — exactly as Marc’s instinct says. But he is not the 1763 grantee already sitting in the registry as “William Deloach 1763, 700ac.” That man is the grandson, finishing his grandfather’s stalled 1744 claim, with his own father Samuel’s already-established line as the survey’s starting reference point. Naming a grandson after the grandfather is exactly what you’d expect here.

Held at [opinion, OBRD] rather than doxa — nothing here states outright “William Deloach the elder, father of Samuel.” It’s a strong circumstantial fit (the 19-year entry-to-patent lag matching a known local escheat pattern, Samuel’s line already fixed at survey time, and the neat slot it fills next to the already-proven grandson). To push it to doxa would need the actual entry/warrant record for 1744 itself, or an escheat/heir notice bridging the two Williams.

Separately: the metes call a Griffis corner and Hardy Williamson directly — both already in the project’s Griffith/Stinson/Williamson cluster. That’s a fresh, independent tie-line into that cluster’s geometry, worth keeping for the map work regardless of how the genealogy resolves.

Source: “Deloach Wm 1744 nuance.pdf” (Walnut Creek vol); FamilySearch ark 3:1:3QS7-9983-DNK3, img 136/766, IGN 007513462.
See also Deloach_Literacy_CommonLaw_Note.md §6 for the same reasoning in project note form.